

# After You've Gone

Sidney Bechet

Bb Soprano

♩ = 240 F

Fmin7

C ①

A7 ②

D7

G7

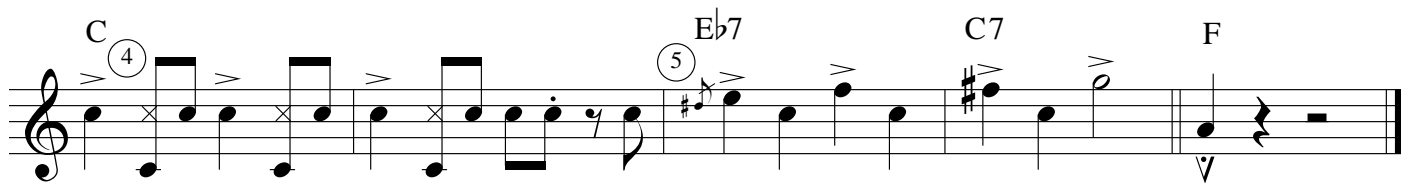
③ C C7

F Fmin7

C A7

Dmin7 A7 Dmin7 Fmin7

1. This note is played by fingering the lower note with the octave key.
2. Use of the A7 blues scale.
3. Triadic basis of Dixieland improvisation.



4. Same as footnote 1.

5. Chromatic ascension to the 5th (G) of C7.